



Helmer Scientific, Noblesville, Indiana  
www.helmerinc.com

Technical Data Sheet  
High-Performance, Medical-grade Freezer  
Model: iLF120-GX, i.Series® Laboratory / Upright

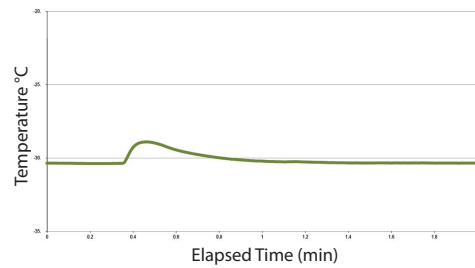
| Application, Rating, & Electrical Data |   |
|--|---|
| Application                            | High-performance storage of medical and scientific products, including vaccines   |
| Storage Volume                         | 20.2 cu ft (572 L)  |
| Temperature Range                      | -15° to -35°C   |
| Set-Point                              | -30°C   |
| Electrical Power                       | 115V 60Hz   220-240V 50/60Hz  |
| Maximum Current                        | 6.6A   3.1A   |
| Facility Supply Rating                 | Branch circuit with earth ground, meeting plug/cord ratings as well as local electrical safety codes and requirements<br>110-120V AC: 15 A (minimum)<br>220-240V AC: 10 A (minimum) |
| Power Plug/Power Cord Length           | NEMA 5-15 hospital-grade   115V 60Hz, 8 to 10 ft (2.4-3.0m) Inquire about additional plug/cord options  |
| Certification/Agency Listing           | QPS (Certified to UL and CSA Standards)<br>IEC/UL61010-2-011: 2016   IEC 61010-1:2010, AMD1:2016<br>ETL certified to NSF/ANSI 456 Vaccine Storage Standard*                         |
| Energy Star                            | Yes, ENERGY STAR® Certified High Performance Freezer  |
| Indoor/Outdoor Use                     | Indoor use only, non-residential  |
| Application Environment                | Non-corrosive, non-flammable, non-explosive   |
| Ambient Operating Temperature          | +15°C to +32°C   +59°F to +90°F   |
| Refrigeration                          |   |
| Refrigeration System                   | VCC compressor-based, forced-air hydrocarbon  |
| Compressor                             | Hermetic, variable speed (VCC). Rated speed range: 1600-5000 rpm  |
| Condenser Type                         | Air-cooled fin and tube, sealed   |
| Expansion Device                       | Cap tube  |
| Evaporator Type                        | Direct expansion with forced-air fin and tube   |
| Defrost Method                         | Automatic   |
| Refrigerant                            | R290, Propane, EU F-Gas and EPA SNAP compliant  |
| Controller / Configuration Settings    |   |
| User Interface                         | i.C <sup>3</sup> ® color touchscreen, door-mounted, 7 in   177 mm, °C or °F   |
| Power Switch                           | On/Off  |
| Controller Type                        | Microprocessor with touchscreen input & display   |
| Security                               | Lockable door, password protected settings, PIN access via optional access control  |
| Control Sensor                         | RTD, stainless steel  |
| Communication Port                     | USB, Remote alarm contacts, RJ45 (Ethernet), API available for Ethernet connectivity development  |
| Power Failure Alarm                    | Yes   |
| High/Low Alarm                         | Yes, fully adjustable   |
| Door Ajar Alarm                        | Yes   |
| Min/Max Temperature                    | Yes, display and reset  |
| Download                               | Yes, via USB in PDF or CSV format   |
| Event Log                              | Yes, all alarms, door openings, download via USB  |
| Temperature Log                        | Yes, download via USB   |
| Access Log                             | Yes, with optional access control, download via USB   |
| Interactive Temperature Graph          | Yes   |
| Temperature Monitoring                 | Yes, two, 4 oz bottles with screw caps  |
| Battery Backup                         | Yes, 20 hr display and alarm back-up for i.C <sup>3</sup> ® touchscreen   Rechargeable 12V, lead acid   |

\*Must be configured with NSF/ANSI 456 Vaccine Storage Certification option (includes Certificate of Calibration)

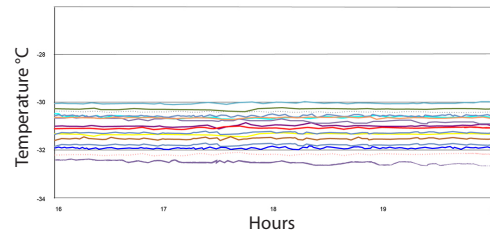
| Performance Characteristics (normal operating conditions) |        |
|---|--------|
| Uniformity   °C   | +/-2.0 |
| Recovery to -29.5°C after 1 min door opening   min        | 20     |
| Stability   °C  | 0.3    |
| Energy consumption   kWh/day                              | 8.12   |
| Noise emission   dB                                       | 52     |
| Heat rejection   BTU/hr                                   | 2177   |
| Pull-down time to -30°C   min                             | 59     |

All performance data from 20 cu ft freezer, 25°C ambient, -30.0°C

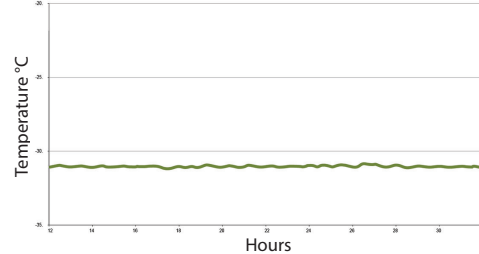
Recovery after 1 minute door opening



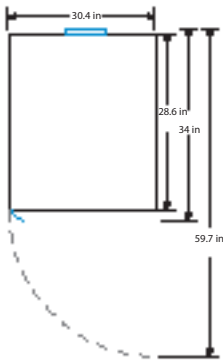
Uniformity



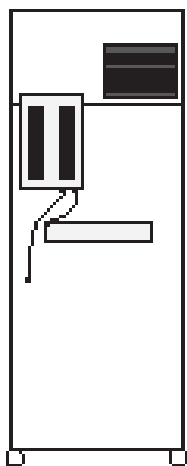
Stability



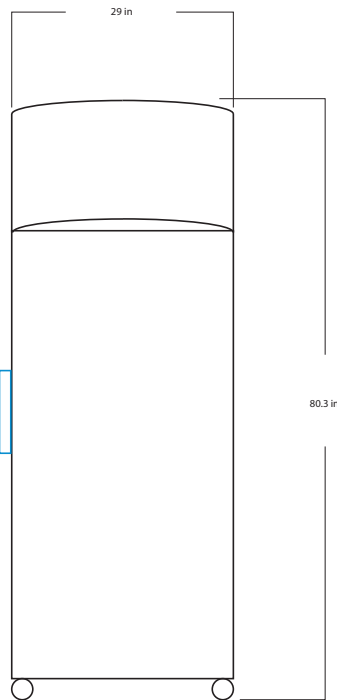
| Dimensions and Construction  |  |
|------------------------------|--|
| Interior (w x h x d)         | 24.7 x 58.1 x 24 in   628 x 1476 609 mm  |
| Exterior (w x h x d)         | 29 x 80.3 x 28.6 in   737 x 2039 x 725 mm  |
| Overall Exterior (w x h x d) | 30.4 x 80.3 x 34.0 in   773 x 2039 x 862 mm<br>*Includes iSeries bezel, handle and electrical box<br>*subtract 0.3" from depth for units prior to serial number 2150000  |
| Insulation                   | Sustainable, US EPA and SNAP approved foam   |
| Exterior/Interior Finish     | Bacteria-resistant powder-coating  |
| Door                         | 1, solid, right-hinged   |
| Access Port                  | Top Access Port- for external monitoring probe(s) (0.75 in   19 mm diameter)   |
| Interior Storage (w x h x d) | 4 ventilated shelves<br>22.5 x 21.9 in   572 x 557 mm  |
| Casters                      | Yes, swivel-locking  |
| Integrated Access Control    | Optional - electromagnetic-lock with PIN entry via i.C <sup>3</sup> <sup>®</sup> user interface  |
| Net Weight                   | 400 lb   182kg   |
| Shipping Weight              | 490 lb   223 kg  |
| Clearance Requirements       | Minimum of 8" (203mm) above and 3" (76mm) behind unit for proper ventilation, clearance, and feature access  |
| Options   Accessories        | Integrated access control, Stainless steel interior, Chart Recorder, Chart paper, Leveling feet, Remote alarms, Floor and Wall bracket kit, Seismic anchoring kit, Storage trays, Ventilated drawers, Drawer dividers, Screen protector, USB drive for downloading, Left-hinge door, NSF/ANSI 456 Vaccine Storage Certification (includes Certificate of calibration), Temperature validation, Validation guide (IQ/OQ), Certificate of calibration, Extended warranty |
| Certificate of Calibration   | Yes, available as an option, generated with an ISO 17025 certified, NIST traceable thermometer (Certificate of Calibration is included with the NSF/ANSI 456 Vaccine Storage Certification option)   |
| Warranty                     | Rel.i™ Warranty - 5 years compressor, 2 years parts, 1 year labor<br>Outside US and Canada- Contact your distributor for warranty information  |



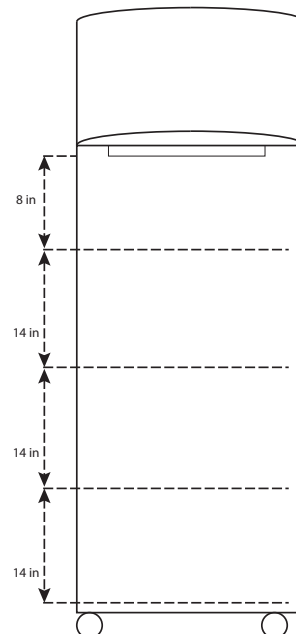
TOP VIEW



BACK VIEW



FRONT VIEW



INTERIOR VERTICAL SPACING