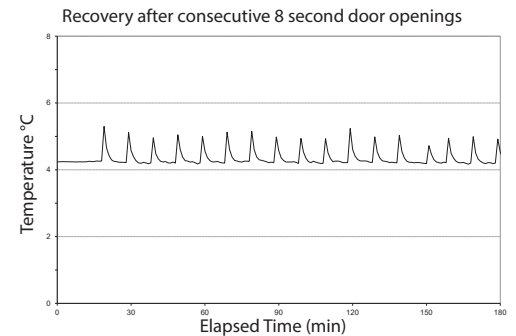


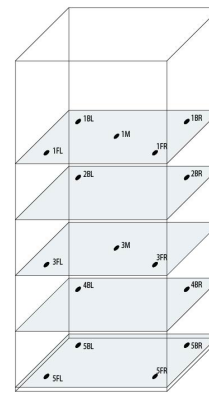
| Application, Rating, & Electrical Data | |
|--|---|
| Application | High-performance storage of medical and scientific products |
| Storage Volume | 13.3 cu ft 377 L |
| Temperature Range | +2°C to +10°C |
| Set Point | +5°C |
| Electrical Power | 115V 60Hz 220-240V 50/60Hz |
| Maximum Current | 2.3A 1.12A |
| Facility Supply Rating | Branch circuit with earth ground, meeting plug/cord ratings as well as local electrical safety codes and requirements 110-120V AC: 15 A (minimum) 220-240V AC: 10 A (minimum) |
| Power Plug/Power Cord Length | NEMA 5-15 hospital-grade 115V 60Hz, 8 to 10 ft (2.4-3.0m) Inquire about additional plug/cord options |
| Certification/Agency Listing | QPS (Certified to UL and CSA Standards) IEC/UL61010-2-01:2016 IEC 61010-1:2010, AMD1:2016 |
| Energy Star | Yes |
| Indoor/Outdoor Use | Indoor use only, non-residential |
| Application Environment | Non-corrosive, non-flammable, non-explosive |
| Ambient Operating Temperature | +15°C to +32°C +59°F to +90°F |
| Refrigeration | |
| Refrigeration System | VCC compressor-based, forced-air hydrocarbon |
| Compressor | Hermetic, variable speed (VCC). Rated speed range: 1300-4000 rpm |
| Condenser Type | Air-cooled fin and tube, sealed |
| Expansion Device | Cap tube |
| Evaporator Type | Direct expansion with forced-air fin and tube |
| Defrost Method | Automatic |
| Refrigerant | R600a, Isobutane, EPA SNAP compliant |
| Controller / Configuration Settings | |
| User Interface | i.C3® color touchscreen, door-mounted, 7in 177mm, °C or °F |
| Power Switch | On/Off |
| Controller Type | Microprocessor with touchscreen input & display |
| Security | Lockable door, password protected settings, PIN access via optional access control |
| Control Sensor | RTD, stainless steel |
| Communication Ports | USB, Remote alarm contacts, RJ45 (Ethernet). API available for Ethernet connectivity development |
| Power Failure Alarm | Yes |
| High/Low Alarms - Tests | Yes, fully adjustable, automatic (Peltier) testing |
| Door Ajar Alarm | Yes, fully adjustable |
| Condenser Temperature Alarm | Yes, fully adjustable |
| Min/Max Temperature | Yes, display and reset |
| Download | Yes, via USB. CSV and PDF |
| Event Log | Yes, all alarms, door openings, download via USB |
| Temperature Log | Yes, download via USB |
| Access Log | Yes, with optional access control, download via USB |
| Interactive Temperature Graph | Yes |
| Temperature Monitoring Ballast | Yes, 4 oz bottle with screw cap, solid ballast optional |
| Battery Back-up | Yes, 20 hr display & alarm back up for i.C3® touchscreen Rechargeable 12V, lead acid |

| Performance Characteristics | |
|--|--------|
| Uniformity °C | +/-1.0 |
| Recovery to 8°C after 3 min door opening min | 15 |
| Stability °C | 0.64 |
| Energy Consumption kWh/day | 2.69 |
| Noise emission dB | 39 |
| Heat Rejection / Emission BTU/hr | 751 |
| Pull-down time to 4°C min | 63 |

All performance data from 13 cu ft refrigerator, 24.8°C ambient, 4.0°C



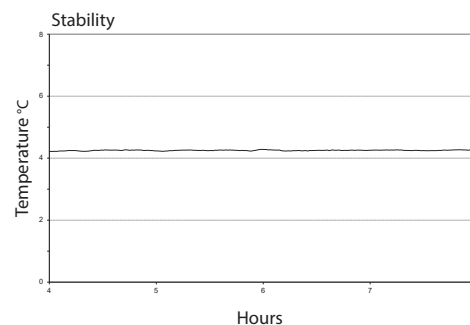
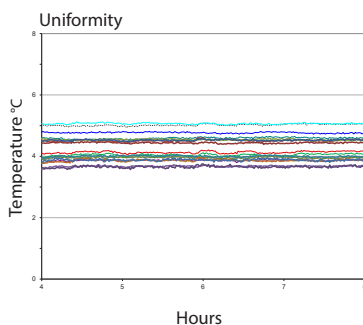
Typical Temperature Map



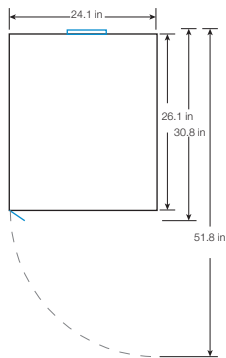
Location of Test Probes

13 cu ft. Temperature Map °C

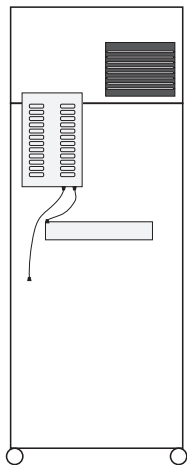
| | AVG | MAX | MIN |
|-----|-----|-----|-----|
| 1BL | 4.0 | 4.1 | 3.9 |
| 1BR | 4.0 | 4.0 | 3.9 |
| 1FL | 4.8 | 4.8 | 4.7 |
| 1FR | 4.6 | 4.7 | 4.5 |
| 1M | 4.4 | 4.4 | 4.3 |
| 2BL | 3.7 | 3.8 | 3.7 |
| 2BR | 3.9 | 4.0 | 3.8 |
| 3FL | 4.2 | 4.3 | 4.2 |
| 3FR | 4.2 | 4.3 | 4.1 |
| 3M | 3.7 | 3.7 | 3.6 |
| 4BL | 3.7 | 3.7 | 3.6 |
| 4BR | 3.7 | 3.8 | 3.6 |
| 5BL | 3.6 | 3.7 | 3.6 |
| 5BR | 3.7 | 3.8 | 3.6 |
| 5FL | 3.8 | 3.8 | 3.7 |
| 5FR | 3.3 | 3.4 | 3.2 |



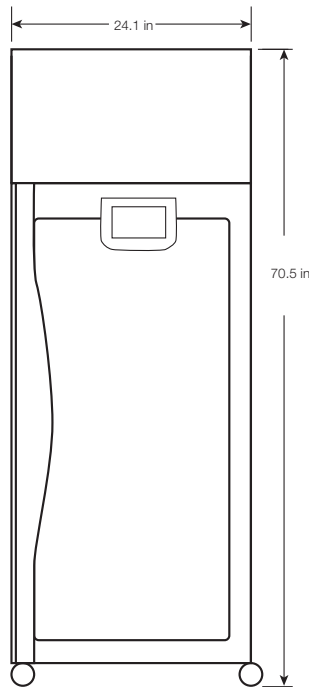
| Dimensions and Construction | |
|------------------------------|--|
| Interior (w x h x d) | 20 x 49.4 x 22.9 in 508 x 1255 x 583 mm |
| Exterior (w x h x d) | 24.1 x 70.5 x 26.1 in 612 x 1790 x 663 mm |
| Overall Exterior (w x h x d) | 24.1 x 70.5 x 30.8 in 625 x 1790 x 780 mm *add 0.5" to width if choosing optional access control, Includes handle and electrical box |
| Insulation | Sustainable, US EPA, SNAP and GRAS approved foam |
| Exterior/Interior Finish | Bacteria-resistant powder-coating |
| Door | 1, dual-pane glass, right-hinge |
| Access Port | Top Access Port- for external monitoring probe(s) (0.75 in 19 mm diameter) Left Sidewall Port - with interior and exterior plugs (1.75 in 45 mm diameter) |
| Interior Storage (w x h x d) | 1 ventilated, powder coated, shelf, adjustable 17.9 x 21.3 in 454 x 541 mm, 100 lb 46 kg max capacity/shelf 5 ventilated, powder coated, pull-out drawers, adjustable 16.7 x 4 x 20.6 in 424 x 101 x 523 mm, 100 lb 46 kg max capacity/drawer |
| Casters | Yes, swivel-locking |
| Integrated Access Control | Optional- electromagnetic-lock with PIN entry via i.C3® user interface |
| Net Weight | 338 lb 154 kg |
| Shipping Weight | 405 lb 184 kg |
| Clearance Requirements | Minimum of 8" (203mm) above and 3" (76mm) behind unit for clearance and feature access |
| Options Accessories | Integrated access control, Stainless steel interior, Chart recorder, Chart paper, Leveling feet, Solid ballast, Remote alarms, Remote lock adapter kit, Floor and Wall bracket kit, Seismic anchoring kit, Storage trays, Screen protector, Locking drawer, Left-hinge door, Solid or heated glass door, Side-wall access ports, Certificate of calibration, Temperature validation, Validation guide (IQ/OQ), Extended warranty |
| Warranty | Reli™ Plus Warranty- 7 years compressor, 2 years parts, 1 year labor Outside US and Canada- Contact your distributor for warranty information |



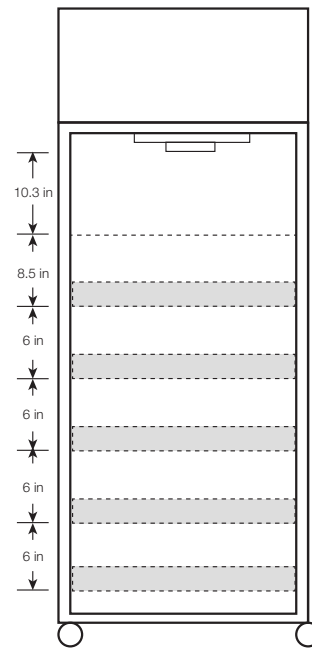
TOP VIEW



BACK VIEW



FRONT VIEW



INTERIOR VERTICAL SPACING