



CENTRIFUGES

# MIKRO 200

MICROLITER / PCR STRIP / CRYO

## Fast and Flexible

Ranks amongst the fastest microliter centrifuges in its class. Capable of holding 30 tubes per run at an RCF of up to 21,382. High sample throughput and optimal separation results. Can be used to prepare samples in a wide variety of applications in molecular biology.

Available with optional temperature control, the MIKRO 200 R cools down to +4°C in just 10 to 15 minutes using the Fast Cool function.

<b>MAX. CAPACITY</b>	30 x 1.5/2.0 mL
<b>MAX. RPM/RCF</b>	15,000/21,382
<b>TEMP. CONTROL</b>	-10 to + 40°C (MIKRO 200 R)

Distributed by:



Model MIKRO 200 without temperature control pictured.



### QUIET OPERATION

Quiet as a normal conversation. Will not increase noise levels or contribute to distractions.



### FUNCTIONAL DESIGN

Easy to lift lid with front-facing control panel for effortless interaction and programming.



### ENHANCED SAFETY

Self-closing, auto-locking lid with steel latches. All-metal chamber provides reinforced security.



### FIVE YEAR WARRANTY

All Hettich centrifuges are protected by our 5-year warranty and full technical support.



### FULLY CERTIFIED

Engineered and manufactured in accordance with all relevant safety and production standards.



### MADE IN GERMANY

German engineered and manufactured to be quiet, reliable and safe since 1904.

**DIMS. (HxWxD):** 10.2" x 10.8" x 13.5" (200) | 10.2" x 11" x 21.8" (200 R)

→ [hettweb.com/mikro200](http://hettweb.com/mikro200)

# HETTICH MIKRO 200 APPLICATION PACKAGES




## MIKRO 200 MICROLITER TUBE PACKAGE - 24

	Tube Qty.	Volume (mL)	Size (mm)	RPM	RCF	PKG. NO.	PKG. NO. (TEMP. CONTROL)
	24	1.5 - 2.0	11 x 38	≤ 15,000	≤ 21,382	<b>200MICRO24</b>	<b>200RMICRO24</b>
<b>Includes:</b> (1) Centrifuge, (1) Fixed-angle Rotor, (24) Adapters 1.5mL, (1) Bio-containment Lid (optional)							
						For bio-containment add <b>"-BC"</b> to package no. above	


## MIKRO 200 MICROLITER TUBE PACKAGE - 30

	Tube Qty.	Volume (mL)	Size (mm)	RPM	RCF	PKG. NO.	PKG. NO. (TEMP. CONTROL)
	30	1.5 - 2.0	11 x 38	≤ 15,000	≤ 20,627	<b>200MICRO30</b>	<b>200RMICRO30</b>
<b>Includes:</b> (1) Centrifuge, (1) Fixed-angle Rotor, (30) Adapters 1.5mL, (1) Bio-containment Lid (optional)							
						For bio-containment add <b>"-BC"</b> to package no. above	

## MIKRO 200 MICROLITER TUBE PACKAGE - STRIP

	Strip Qty.	Volume (mL)	Size (mm)	RPM	RCF	PKG. NO.	PKG. NO. (TEMP. CONTROL)
	4	PCR Strip: (8) 0.2	--	≤ 15,000	≤ 14,338	<b>200MICROSTRIP</b>	<b>200RMICROSTRIP</b>
<b>Includes:</b> (1) Centrifuge, (1) Fixed-angle Rotor							


## MIKRO 200 CRYO TUBE PACKAGE

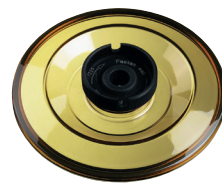
	Tube Qty.	Volume (mL)	Size (mm)	RPM	RCF	PKG. NO.	PKG. NO. (TEMP. CONTROL)
	20	1.8	--	≤ 15,000	≤ 21,130	<b>200CRYO</b>	<b>200RCRYO</b>
<b>Includes:</b> (1) Centrifuge, (1) Fixed-angle Rotor, (1) Bio-containment Lid (optional)							
						For bio-containment add <b>"-BC"</b> to package no. above	

## MIKRO 200 SPIN COLUMN PACKAGE - BIO-CONTAINMENT

	Tube Qty.	Volume (mL)	Size (mm)	RPM	RCF	PKG. NO.	PKG. NO. (TEMP. CONTROL)
	24	1.5 - 2.0	11 x 38	≤ 15,000	≤ 21,382	<b>200MICROSC-BC</b>	<b>200RMICROSC-BC</b>
<b>Includes:</b> (1) Centrifuge, (1) Fixed-angle Rotor, (24) Adapters, (1) Bio-containment Lid							

## MIKRO 200 CUSTOM PACKAGE

	<b>Supports over 28 application configurations, please inquire for more information</b>						
	<b>Tube types include:</b> Microliter (0.2 - 0.8 mL adapter combinations are available, inquire for details), Micro Spin Columns, Cryo, PCR strips, Pediatric						



Bio-containment lid (optional) for  
**MICROLITER TUBE PACKAGE - 24,**  
**MICROLITER TUBE PACKAGE - 30 &**  
**CRYO TUBE PACKAGE**



[hettweb.com/mikro200](http://hettweb.com/mikro200)

DISTRIBUTED BY:



**Helmer Scientific**  
14400 Bergen Boulevard, Noblesville, IN 46060 USA  
**Toll Free:** (800) 743-5637 | **Email:** sales@helmerinc.com  
**www.helmerinc.com**



Discover more solutions online at [hettweb.com](http://hettweb.com) **Toll Free:** 1(866) 370-4388 **Email:** info@hettweb.com  
Copyright © 2016 Hettich Instruments, LP. All rights reserved. Lit. No. PS-MIKRO-200-E Rev A 01-2016.



LAB TECHNOLOGY